

Dry running rotary vane 乾式真空&壓力泵
pressure & vacuum pump



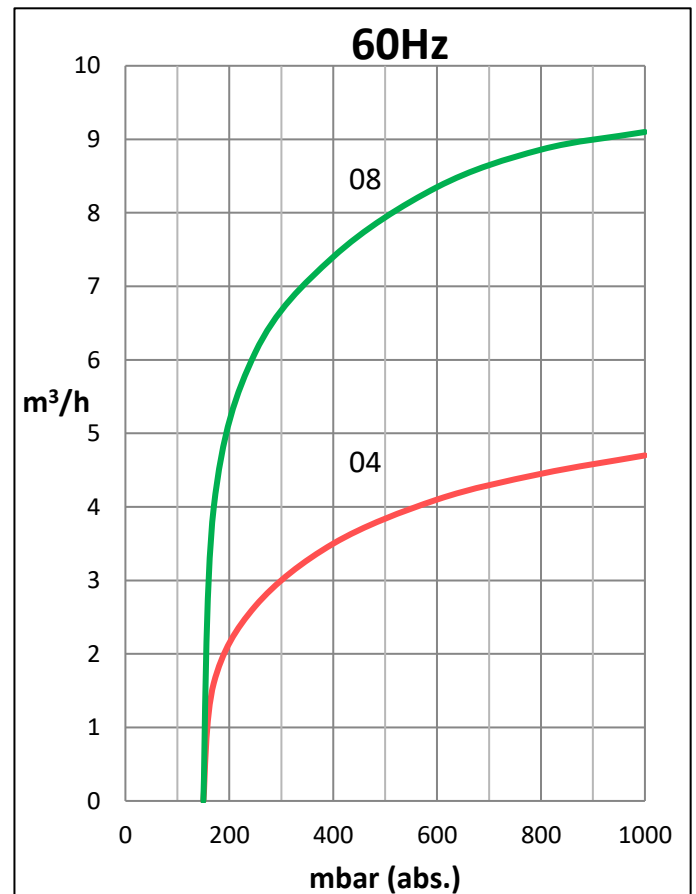
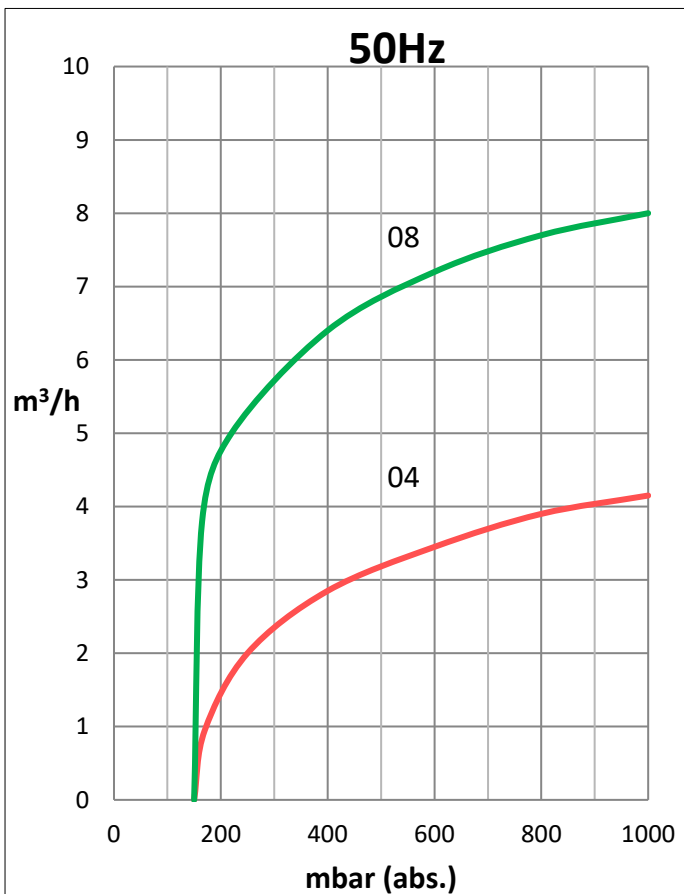
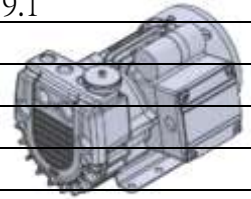
高裕幫浦有限公司

KAO YU PUMP CO.,LTD

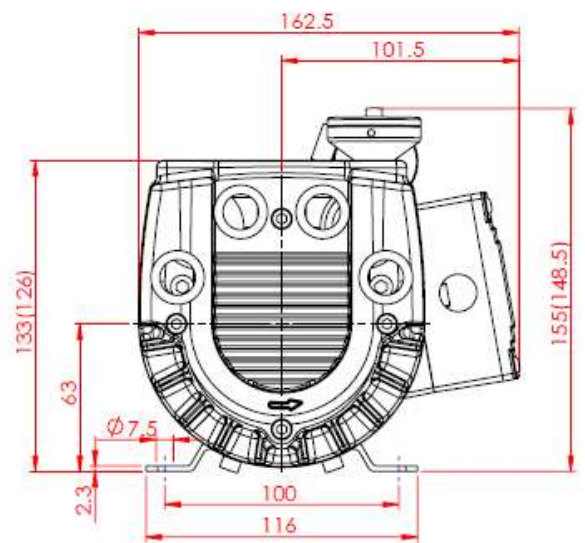
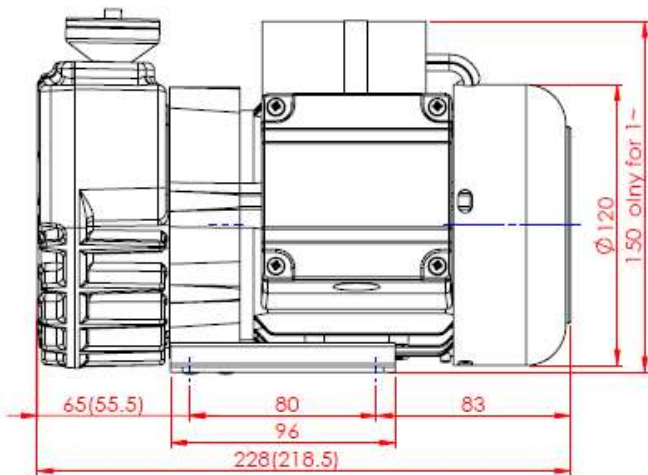
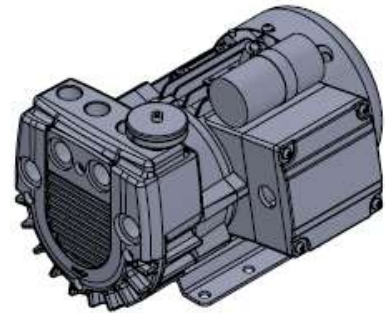
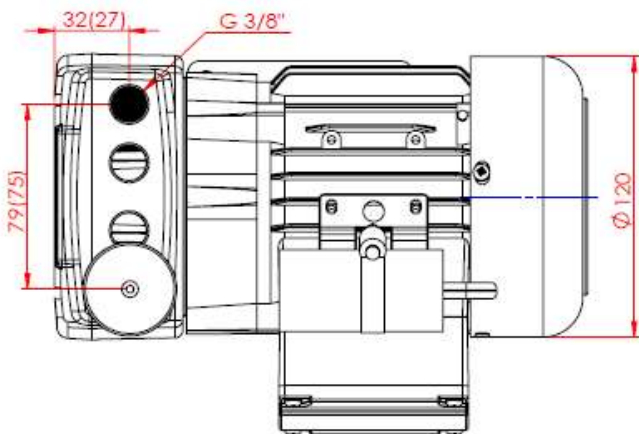
VD-V Series

Dry running rotary vane vacuum pump

VD-V		04	08
m ³ /h	50Hz	4.1	8.0
	60Hz	4.7	9.1
mbar (abs.) ●		150	
3~	50Hz	200-240 / 345-415V ± 5%	
	60Hz	220-275 / 380-480V ± 5%	
1~		230V ± 10% (50 / 60Hz)	
kW (3~)	50Hz	0.18	0.37
	60Hz	0.21	0.44
kW (1~)	50Hz	0.18	0.35
	60Hz	0.21	0.42
A (3~)	50Hz	1.1 / 0.63	1.78 / 1.03
	60Hz	1.1 / 0.63	1.70 / 0.98
A (1~)	50Hz	1.25	2.4
	60Hz	1.30	2.7
min ⁻¹	50Hz	2800	2780
	60Hz	3200	3250
dB(A)	50Hz	59	58
	60Hz	61	61
kg	3~/1~	7	10



VD-V04 ~ 08 尺寸圖 / Dimensions



圖中 (xx.) 尺寸為 VD-V04

*本公司保有設計變更之權利，恕不另行通知。

*We reserve the right to change the design without notice.

VD-V Series

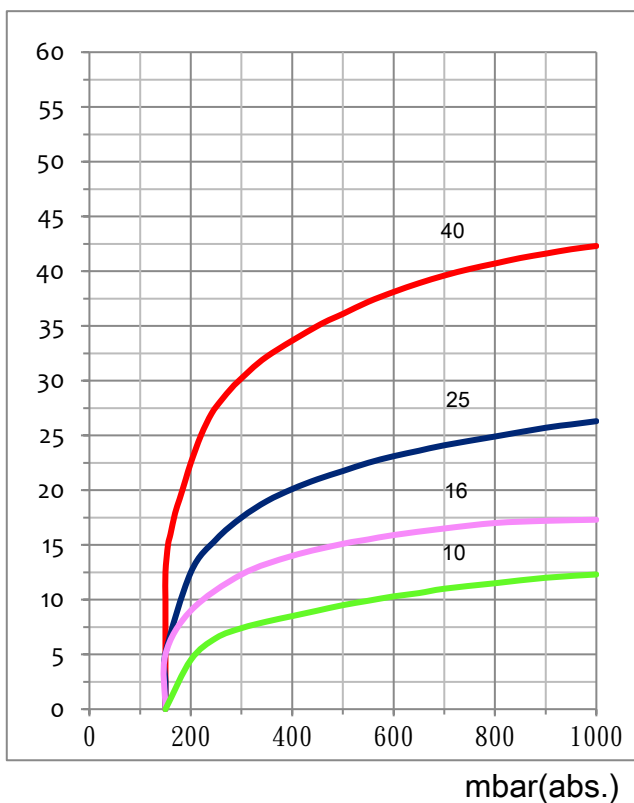
Dry running rotary vane vacuum pump

VD-V		10	16	25	40
m ³ /h	50Hz	11	16.6	25.4	42.0
	60Hz	13	20.0	30.5	50.0
mbar (abs.) ●		150			
3~	50Hz	200-240 / 345-415V ± 5%			
	60Hz	220-275 / 380-480V ± 5%			
1~		230V ± 10% (50 / 60Hz)			
kW (3~)	50Hz	0.37	0.55	0.75	1.30
	60Hz	0.45	0.65	0.90	1.50
kW (1~)	50Hz	0.37	0.55	0.75	1.30
	60Hz	0.45	0.65	0.90	1.50
A (3~)	50Hz	1.90 / 1.10	2.70 / 1.55	3.60 / 2.10	6.60 / 3.80
	60Hz	1.90 / 1.10	2.90 / 1.70	4.00 / 2.30	6.90 / 4.00
A (1~)	50Hz	3.20	4.5	5.60	10.00
	60Hz	3.20	5.0	6.50	10.00
min ⁻¹	50Hz	1420			
	60Hz	1700			
dB(A)	50Hz	60	61	64	67
	60Hz	61	63	66	69
kg	3~/1~	19.3 / 20.6	21.5 / 21.8	30.5 / 31.5	38 / 39



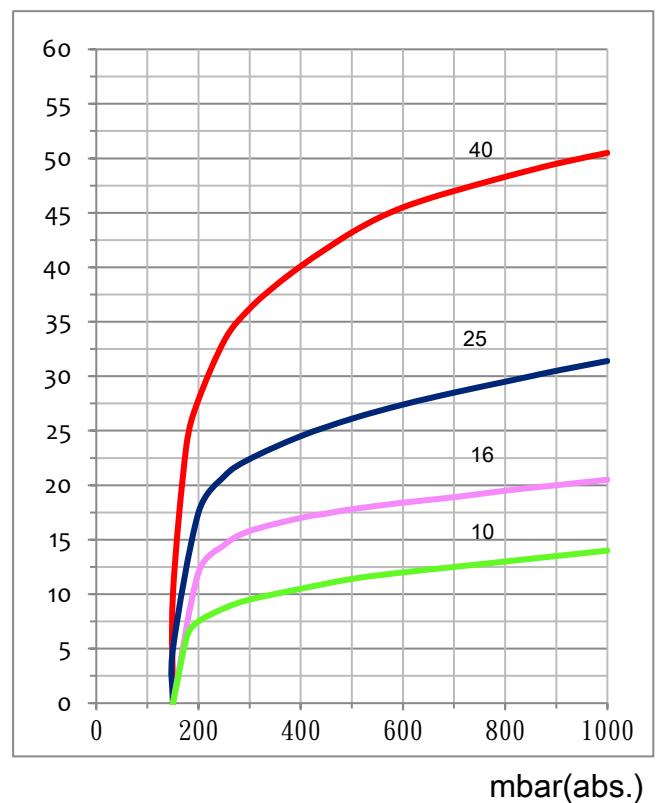
m³/h

50 Hz

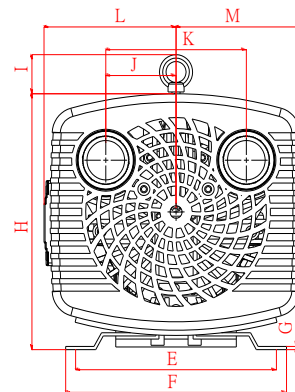
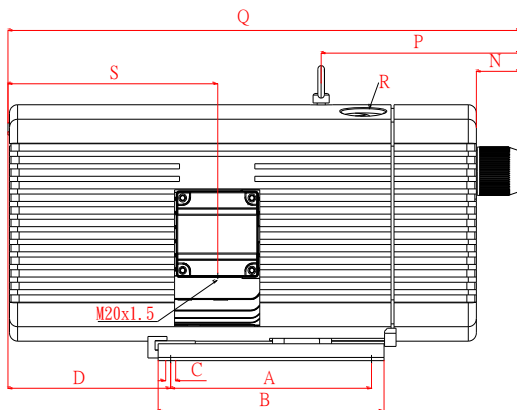
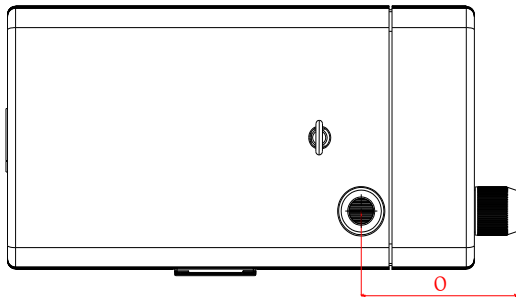


m³/h

60 Hz

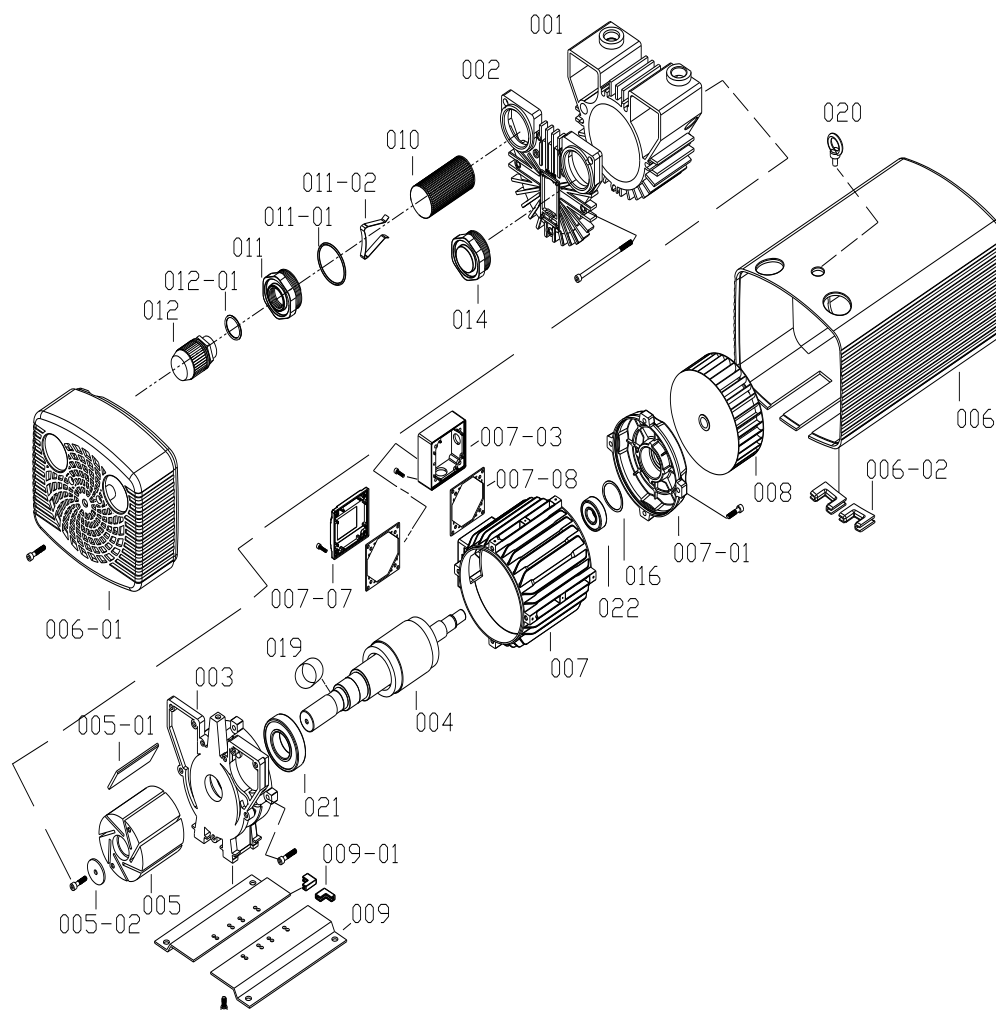


VD-V10 ~ 40 尺寸圖 / Dimensions



VD-V		10	16	25	40
(mm)	A	200	200	200	200
	B	225	225	225	225
	C	10	10	10	10
	D	87	87	159	159
	E	160	160	190	190
	F	190	190	220	220
	G	3	3	3	3
	H	195	195	245	245
	I	37	37	37	37
	J	54.5	54.5	70	70
	K	109	109	140	140
	L	111	111	132	132
	M	99	99	126	126
	N	25.5	45.5	45	45
	O	108	133	126	158
	P	141	166	168	200
Q	387	412	480	512	
R	G 1/2	G 1/2	G 3/4	G 3/4	
S	154	154	209	209	

零件分解圖 / Parts Illustration



編號	零件名稱	編號	零件名稱	編號	零件名稱
ITEM	PARTS NAME	ITEM	PARTS NAME	ITEM	PARTS NAME
001	本體 Housing	007-03	配線盒 Terminal box	012-01	O 型環 O-Ring
002	本體蓋 Housing cover	007-07	配線盒蓋 Terminal cover	013	壓力調壓閥 Pressure regulating valve
003	馬達前蓋 Front motor cover	007-08	配線盒墊片 Terminal box washer	014	出口消音器 Exhaust silencer
004	馬達轉子 Motor rotor	008	散熱風扇 Fan cpl.	015	出口過濾器 Filter cartridge cpl
005	轉子 Rotor	009	腳座 Mounting plate	016	波浪墊片 Ware washer
005-01	葉片 Blade	009-01	橡膠墊 Rubber mats	017	過濾器 Filter cartridge cp
005-02	墊片 Washer	010	入口過濾器 Filter cartridge cpl.	018	過濾器蓋 Filter cover
006	外殼 Case	011	旋蓋 Screwed cover	019	定位環 Tolerance ring
006-01	外殼蓋 Case cover	011-01	O 型環 O-Ring	020	吊環 Lifting eye
006-02	橡膠墊 Rubber mats	011-02	彈簧夾 Spring	021	前軸承 Front bearing
007	馬達 Motor	011-03	旋蓋 Screwed cover	022	後軸承 Rear bearing
007-01	馬達後蓋 Motor cover	012	真空調壓閥 Vacuum regulating valve		

* 訂購時請告知型號+零件編號 (例如:VD-V10+002)

* Please notify model+parts item when you purchase.

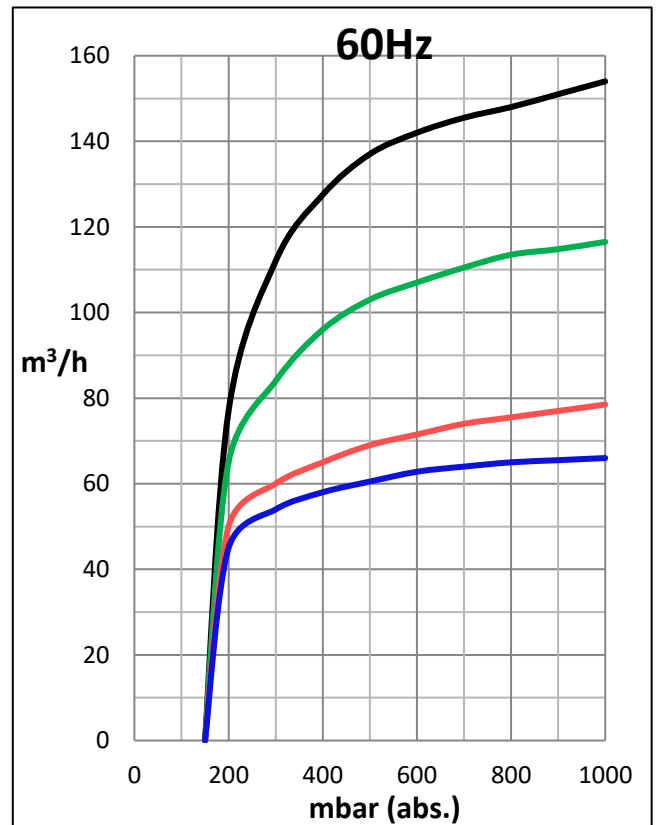
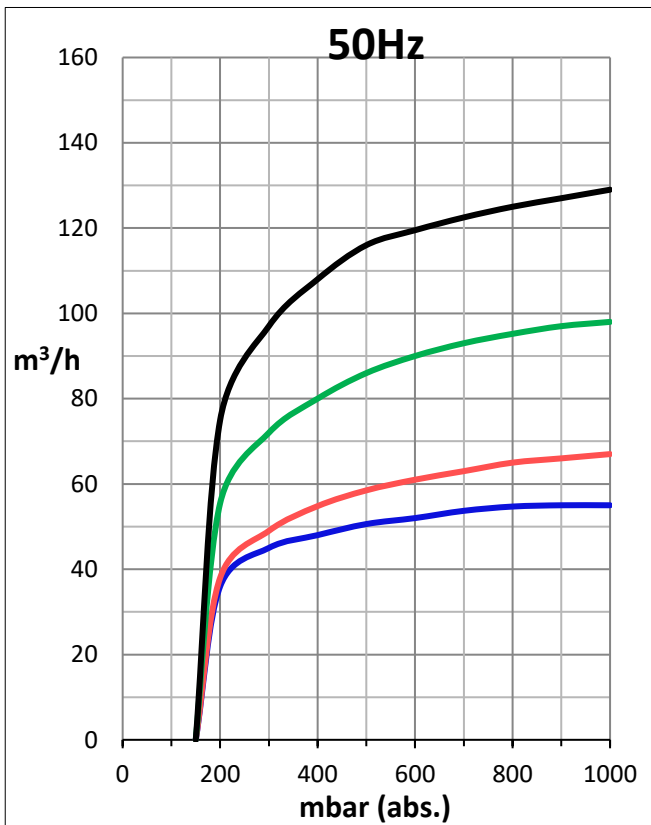
*本公司保有設計變更之權利，恕不另行通知。

*We reserve the right to change the design without notice.

VD-V Series

Dry running rotary vane vacuum pump

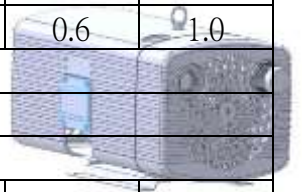
VD-V		60	80	100	140
m ³ /h	50Hz	55	67	98	129
	60Hz	66	78.5	112	154
mbar (abs.) ●	50Hz	100			100
	60Hz	100			200
3~	50Hz	200-240 / 345-415V ± 5%			
	60Hz	220-275 / 380-480V ± 5%			
kW (3~)	50Hz	2.4	2.4	3	4
	60Hz	3	3	3.5	4.8
A (3~)	50Hz	10.6-11.4 / 6.1-6.6		13.0-13.6 / 7.5-7.9	17.2-21.9 / 9.9-12.7
	60Hz	12.6-10.6 / 7.3-6.1		20.5-19.0 / 11.8-11.0	-
min ⁻¹ (3~)	50Hz	1440	1440	1465	1430
	60Hz	1733	1733	1780	1765
dB(A)	50Hz	71	72	75	76
	60Hz	73	75	77	79
kg	3~	69	69	101	111



VD-C Series

Dry running rotary vane compressor pump

VD-C		10		16		25		40	
m ³ /h	50Hz	11.0		16.6		25.4		42.0	
	60Hz	13.0		20.0		30.5		50.0	
bar	50Hz	0.7	1.0	0.7	1.0	0.7	1.0	0.7	1.0
	60Hz	0.6	1.0	0.6	1.0	0.6	1.0	0.6	1.0
3~	50Hz	200-240 / 345-415V ± 5%							
	60Hz	220-275 / 380-480V ± 5%							
1~		230V ± 10% (50 / 60Hz)							
kW (3~)	50Hz	0.37	0.45	0.55	0.75	0.75	1.10	1.50	1.85
	60Hz	0.45	0.55	0.65	0.90	0.90	1.30	1.80	2.20
kW (1~)	50Hz	0.37	0.45	0.55	0.75	0.75	1.1		1.85
	60Hz	0.45	0.55	0.65	0.90	0.90	1.3		2.20
A (3~)	50Hz	2.3 / 1.33	2.8 / 1.6	3.0 / 1.73	3.6 / 2.1	3.6 / 2.1	5.55 / 3.2	6.6 / 3.8	9.0 / 5.2
	60Hz	2.35 / 1.36	2.6 / 1.5	3.1 / 1.79	3.8 / 2.2	4.0 / 2.3	5.55 / 3.2	6.9 / 4.0	9.0 / 5.2
A (1~)	50Hz	3.2	3.8	4.5	5.6	5.6			
	60Hz	3.2	3.8	5.0	6.0	6.5			
min ⁻¹	50Hz	1420							
	60Hz	1700							
dB(A)	50Hz	60		63		65		67	
	60Hz	61		64		66		69	
kg	3~	21.5	20.8	21.5	22.5	30.5	31.5	38	39
	1~	20.6	21.2	21.8	22.8	31.5			

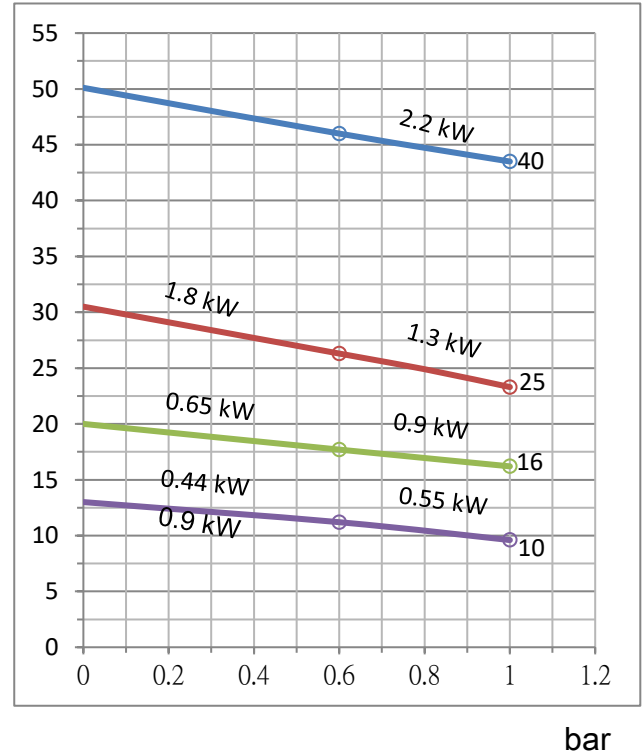
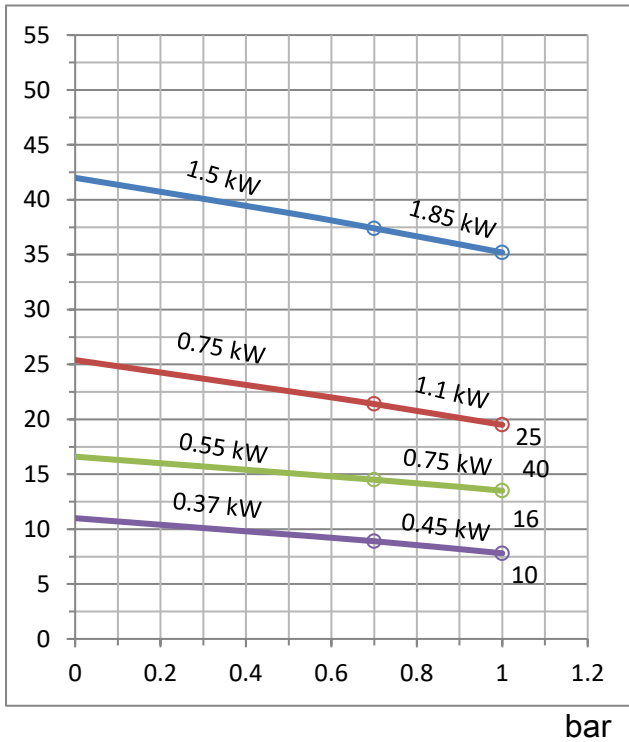


m³/h

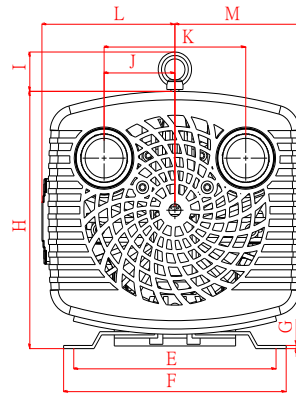
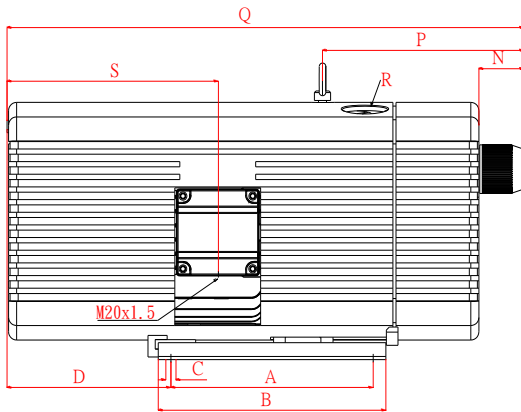
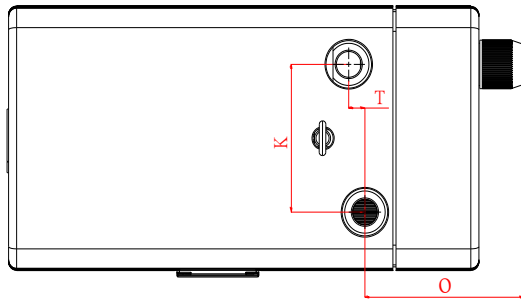
50 Hz

m³/h

60 Hz

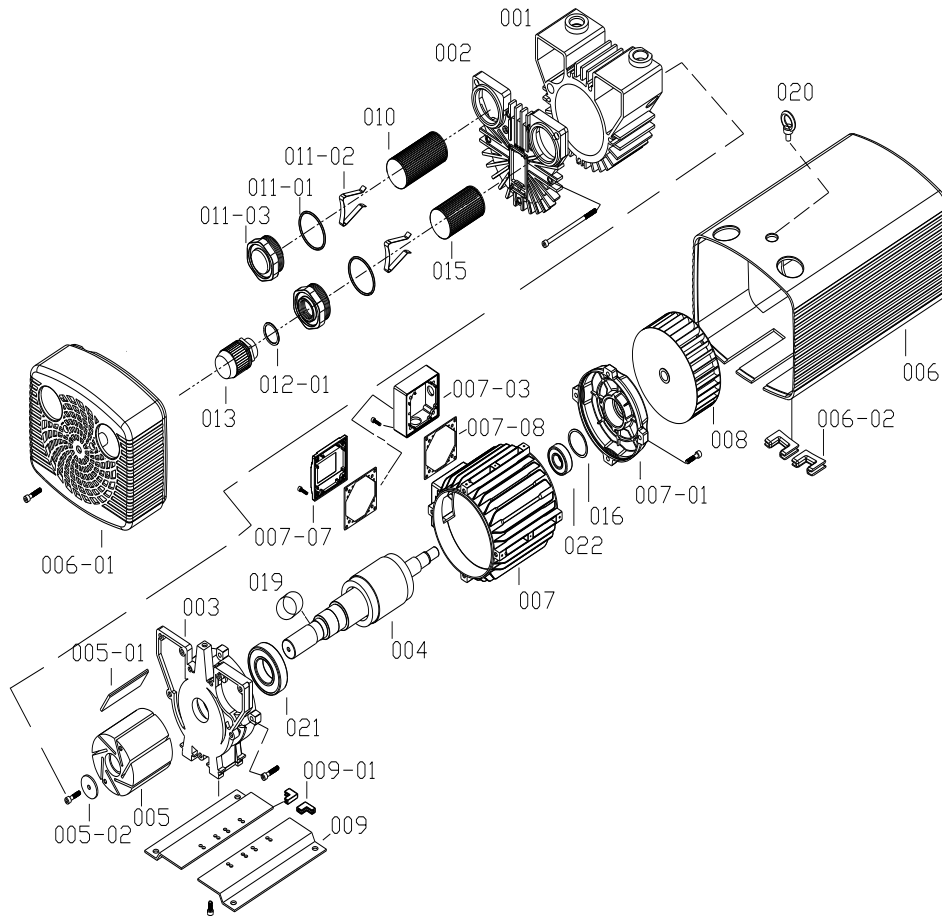


VD-C 10 ~ 40 尺寸圖 / Dimensions



VD-C		10	16	25	40
(mm)	A	200	200	200	200
	B	225	225	225	225
	C	10	10	10	10
	D	87	87	159	159
	E	160	160	190	190
	F	190	190	220	220
	G	3	3	3	3
	H	195	195	245	245
	I	37	37	37	37
	J	54.5	54.5	70	70
	K	109	109	140	140
	L	111	111	132	132
	M	99	99	126	126
	N	25.5	45.5	45	45
	O	108	133	126	158
	P	141	166	168	200
	Q	385	410	480	512
R	G 1/2	G 1/2	G 3/4	G 3/4	
S	154	154	209	209	

零件分解圖 / Parts Illustration



編號	零件名稱	編號	零件名稱	編號	零件名稱
ITEM	PARTS NAME	ITEM	PARTS NAME	ITEM	PARTS NAME
001	本體 Housing	007-03	配線盒 Terminal box	012-01	O 型環 O-Ring
002	本體蓋 Housing cover	007-07	配線盒蓋 Terminal cover	013	壓力調壓閥 Pressure regulating valve
003	馬達前蓋 Front motor cover	007-08	配線盒墊片 Terminal box washer	014	出口消音器 Exhaust silencer
004	馬達轉子 Motor rotor	008	散熱風扇 Fan cpl.	015	出口過濾器 Filter cartridge cpl
005	轉子 Rotor	009	腳座 Mounting plate	016	波浪墊片 Ware washer
005-01	葉片 Blade	009-01	橡膠墊 Rubber mats	017	過濾器 Filter cartridge cp
005-02	墊片 Washer	010	入口過濾器 Filter cartridge cpl.	018	過濾器蓋 Filter cover
006	外殼 Case	011	旋蓋 Screwed cover	019	定位環 Tolerance ring
006-01	外殼蓋 Case cover	011-01	O 型環 O-Ring	020	吊環 Lifting eye
006-02	橡膠墊 Rubber mats	011-02	彈簧夾 Spring	021	前軸承 Front bearing
007	馬達 Motor	011-03	旋蓋 Screwed cover	022	後軸承 Rear bearing
007-01	馬達後蓋 Motor cover	012	真空調壓閥 Vacuum regulating valve		

* 訂購時請告知型號+零件編號 (例如:VD-C10+002)

* Please notify model+parts item when you purchase.

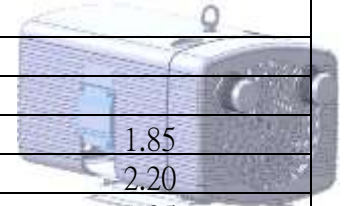
*本公司保有設計變更之權利，恕不另行通知。

*We reserve the right to change the design without notice.

VD-K Series

Dry running rotary vane pressure vacuum pump

VD-K		16	25	40
3~	50Hz	200-240 / 345-415V ± 5%		
	60Hz	220-275 / 380-480V ± 5%		
1~		230V ± 10% (50 / 60Hz)		
kW (3~)	50Hz	0.55	1.10	1.85
	60Hz	0.65	1.30	2.20
kW (1~)	50Hz	0.55	1.10	1.85
	60Hz	0.65	1.30	2.20
A (3~)	50Hz	3.6 / 2.1	5.55 / 3.2	9.0 / 5.2
	60Hz	3.8 / 2.2	5.55 / 3.2	9.0 / 5.2
A (1~)	50Hz	5.0	6.60	10.50
	60Hz	4.5	7.90	
min ⁻¹	50Hz	1420		
	60Hz	1700		
dB(A)	50Hz	64	66	68
	60Hz	66	68	70
kg	3~	21.4	31.5	39
	1~	21.6	32.5	40



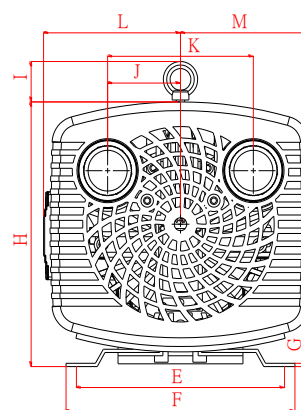
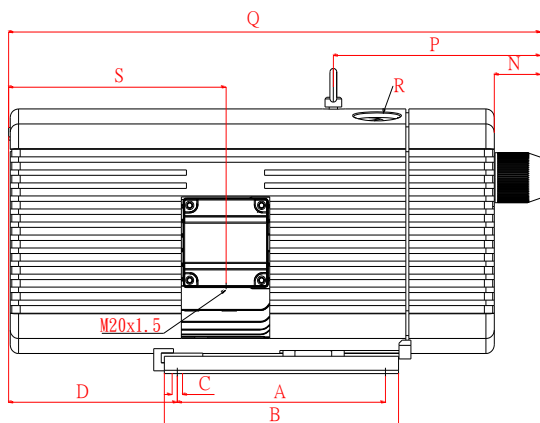
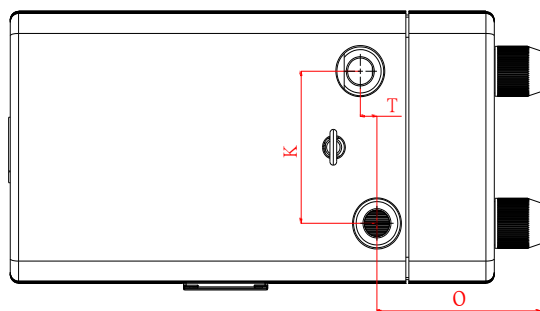
VD-K 16	bar	S	0	-0.4	-0.5	-0.6	0	-0.4	-0.5	-0.6	0	-0.4	-0.5	-0.6	0	-0.4	-0.5	-0.6	
		D	0			+0.4			+0.5			+0.6							
	m ³ /h (50 Hz)	S*	15.6	11.8	12.1		14.6	11.7	10.6		14.3	11.1	10.0						
		D	16.5	12.5	11.6		15.4	11.3	10.3		15.0	10.8	9.9						
	m ³ /h (60 Hz)	S*	18.8	15.4	14.5		17.7	14.0	12.7		17.2	13.2	12.0						
D		19.7	15.5	13.9		18.5	13.8	12.4		18.0	13.1	11.9							
kW	50 Hz	0.55																	
	60 Hz	0.65																	

VD-K 25	bar	S	0	-0.4	-0.5	-0.6	0	-0.4	-0.5	-0.6	0	-0.4	-0.5	-0.6	0	-0.4	-0.5	-0.6
		D	0			+0.4			+0.5			+0.6						
	m ³ /h (50 Hz)	S*	24.0	19.5	18.0	16.5	22.0	17.0	15.4	13.6	21.5	16.3	14.4	12.5	21.0	15.3	13.4	11.6
		D	25.8	19.7	18.1	16.5	23.5	17.2	15.7	14.1	22.5	16.4	14.8	13.5	21.5	15.7	14.3	13.0
	m ³ /h (60 Hz)	S*	28.8	23.4	21.6	19.8	26.4	20.4	18.5	16.3	25.8	19.6	17.3	15.0	25.2	18.4	16.1	13.9
D		30.4	23.6	21.7	19.8	28.0	20.6	18.8	16.9	27.0	19.7	17.8	16.2	25.8	18.8	17.2	15.6	
kW	50 Hz	1.10																
	60 Hz	1.30																

VD-K 40	bar	S	0	-0.4	-0.5	-0.6	0	-0.4	-0.5	-0.6	0	-0.4	-0.5	-0.6	0	-0.4	-0.5	-0.6
		D	0			+0.4			+0.5			+0.6						
	m ³ /h (50 Hz)	S*	42.0	36.4	34.2	32.0	41.0	35.2	33.0	30.0	39.5	33.5	31.5	28.0	38.3	31.5	29.1	26.5
		D	42.0	31.3	28.4	25.2	40.5	30.1	27.2	24.0	38.7	29.0	26.0	23.1	37.0	27.5	24.7	22.0
	m ³ /h (60 Hz)	S*	50.0	43.7	41.0	38.4	49.2	42.2	39.6	36.0	47.4	40.2	37.4	33.6	46.0	37.8	34.9	31.8
D		50.0	37.6	34.1	30.2	48.6	36.1	32.6	28.8	46.4	34.8	31.2	27.7	44.4	33.0	29.6	26.4	
kW	50 Hz	1.85																
	60 Hz	2.20																

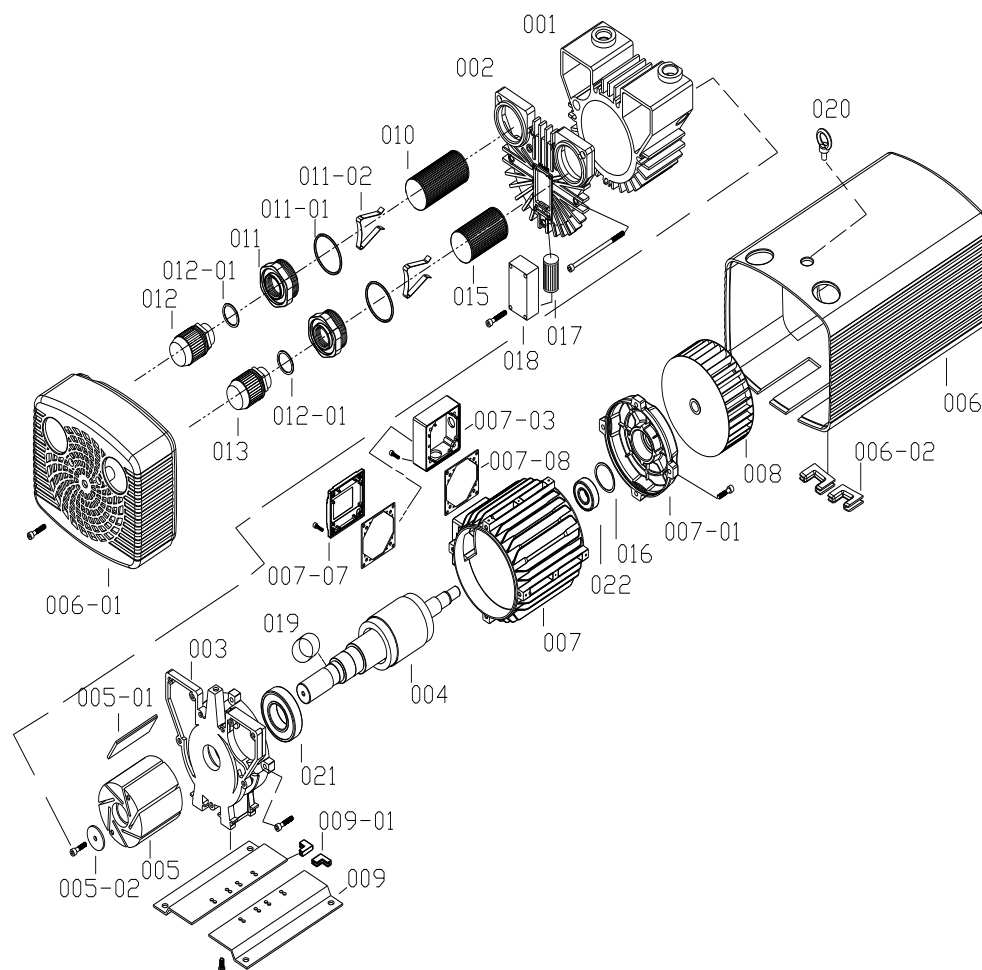
S- Suction air / D-Compressed air

VD-K**尺寸圖 / Dimensions



VD-K		10	16	25	40
(mm)	A	200	200	200	200
	B	225	225	225	225
	C	10	10	10	10
	D	87	87	159	159
	E	160	160	190	190
	F	190	190	220	220
	G	3	3	3	3
	H	195	195	245	245
	I	37	37	37	37
	J	54.5	54.5	70	70
	K	109	109	140	140
	L	111	111	132	132
	M	99	99	126	126
	N	25.5	45.5	45	45
	O	108	133	126	158
	P	141	166	168	200
Q	385	410	480	512	
R	G 1/2	G 1/2	G 3/4	G 3/4	
S	154	154	209	209	

零件分解圖 / Parts Illustration



編號	零件名稱	編號	零件名稱	編號	零件名稱
ITEM	PARTS NAME	ITEM	PARTS NAME	ITEM	PARTS NAME
001	本體 Housing	007-03	配線盒 Terminal box	012-01	O 型環 O-Ring
002	本體蓋 Housing cover	007-07	配線盒蓋 Terminal cover	013	壓力調壓閥 Pressure regulating valve
003	馬達前蓋 Front motor cover	007-08	配線盒墊片 Terminal box washer	014	出口消音器 Exhaust silencer
004	馬達轉子 Motor rotor	008	散熱風扇 Fan cpl.	015	出口過濾器 Filter cartridge cpl
005	轉子 Rotor	009	腳座 Mounting plate	016	波浪墊片 Ware washer
005-01	葉片 Blade	009-01	橡膠墊 Rubber mats	017	過濾器 Filter cartridge cp
005-02	墊片 Washer	010	入口過濾器 Filter cartridge cpl.	018	過濾器蓋 Filter cover
006	外殼 Case	011	旋蓋 Screwed cover	019	定位環 Tolerance ring
006-01	外殼蓋 Case cover	011-01	O 型環 O-Ring	020	吊環 Lifting eye
006-02	橡膠墊 Rubber mats	011-02	彈簧夾 Spring	021	前軸承 Front bearing
007	馬達 Motor	011-03	旋蓋 Screwed cover	022	後軸承 Rear bearing
007-01	馬達後蓋 Motor cover	012	真空調壓閥 Vacuum regulating valve		

* 訂購時請告知型號+零件編號 (例如:VD-K10+002)

* Please notify model+parts item when you purchase.

*本公司保有設計變更之權利，恕不另行通知。

*We reserve the right to change the design without notice.